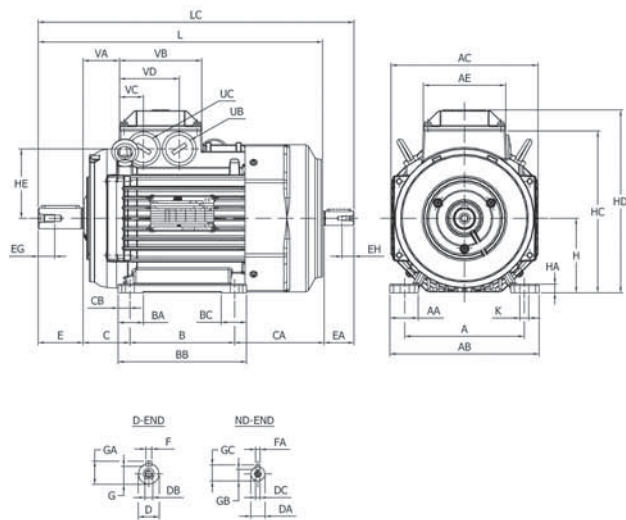


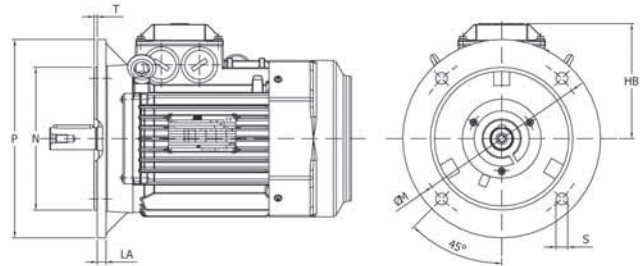
Process performance cast iron motors and premium efficiency motors Dimension drawings

Sizes 71-132

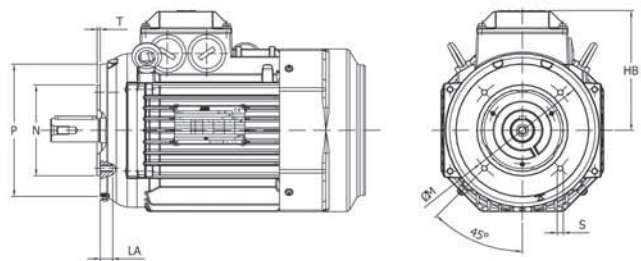
Foot-mounted motor; IM B3 (IM 1001), IM 1002



Flange-mounted motor, large flange; IM B5 (IM 3001), IM 3002



Flange-mounted motor, small flange; IM B14 (IM 3601)



M000417

IM B3 (IM 1001), IM 1002

| Motor size | A | AA | AB | AC | AE | AF | B | BA | BB | BC | C | CA | CB | D-Tol. | DA | DB | DC | E | EA | EG | EH |
|------------|-----|----|-----|-------|-----|-----|-----|----|-----|----|----|-----|------|--------|----|-----|----|----|----|------|------|
| 71 | 112 | 24 | 136 | 139 | 105 | 139 | 90 | 24 | 110 | 24 | 45 | 104 | 10 | 14-j6 | 11 | M5 | M4 | 30 | 23 | 12.5 | 10 |
| 80 | 125 | 28 | 154 | 157 | 105 | 157 | 100 | 28 | 125 | 28 | 50 | 136 | 12.5 | 19-j6 | 14 | M6 | M5 | 40 | 30 | 16 | 12.5 |
| 90S | 140 | 30 | 170 | 177 | 118 | 177 | 100 | 30 | 150 | 55 | 56 | 156 | 12.5 | 24-j6 | 14 | M8 | M5 | 50 | 30 | 19 | 12.5 |
| 90L | 140 | 30 | 170 | 177 | 118 | 177 | 125 | 30 | 150 | 55 | 56 | 131 | 12.5 | 24-j6 | 14 | M8 | M5 | 50 | 30 | 19 | 12.5 |
| 100 | 160 | 38 | 200 | 197 | 118 | 197 | 140 | 34 | 172 | 34 | 63 | 123 | 16 | 28-j6 | 19 | M10 | M6 | 60 | 40 | 22 | 16 |
| 112 | 190 | 41 | 230 | 197 | 118 | 197 | 140 | 34 | 172 | 34 | 70 | 138 | 16 | 28-j6 | 19 | M10 | M6 | 60 | 40 | 22 | 16 |
| 132S | 216 | 47 | 262 | 268.5 | 169 | 261 | 140 | 40 | 212 | 76 | 89 | 228 | 16 | 38-k6 | 24 | M12 | M8 | 80 | 50 | 28 | 19 |
| 132M | 216 | 47 | 262 | 268.5 | 169 | 261 | 178 | 40 | 212 | 76 | 89 | 190 | 16 | 38-k6 | 24 | M12 | M8 | 80 | 50 | 28 | 19 |

| Motor size | F | FA | G | GA | GB | GC | H | HA | HC | HD | HE | K | L | LC | UB | UC | VA | VB | VC | VD |
|------------|----|----|------|------|------|------|-----|----|-----|-----|-----|----|-----|-----|---------|---------|----|-----|------|------|
| 71 | 5 | 4 | 11 | 16 | 8.5 | 12.5 | 71 | 9 | 151 | 178 | 62 | 7 | 264 | 292 | M16x1,5 | M16x1,5 | 30 | 105 | 31.5 | 73.5 |
| 80 | 6 | 5 | 15.5 | 21.5 | 11 | 16 | 80 | 10 | 168 | 195 | 69 | 10 | 321 | 356 | M25x1,5 | M25x1,5 | 32 | 105 | 32 | 74 |
| 90 | 8 | 5 | 20 | 27 | 11 | 16 | 90 | 11 | 189 | 219 | 79 | 10 | 357 | 392 | M25x1,5 | M25x1,5 | 42 | 118 | 39 | 81 |
| 100 | 8 | 6 | 24 | 31 | 15.5 | 21.5 | 100 | 12 | 217 | 247 | 94 | 12 | 381 | 426 | M32x1,5 | M32x1,5 | 45 | 118 | 36 | 84 |
| 112 | 8 | 6 | 24 | 31 | 15.5 | 21.5 | 112 | 12 | 229 | 259 | 94 | 12 | 403 | 448 | M32x1,5 | M32x1,5 | 45 | 118 | 36 | 84 |
| 132 | 10 | 8 | 33 | 41 | 20 | 27 | 132 | 14 | 272 | 300 | 116 | 12 | 533 | 588 | M32x1,5 | M32x1,5 | 65 | 169 | 82 | 130 |

IM B5 (IM3001), IM 3002

| Motor size | HB | LA | M | N | P | S | T |
|------------|-------|------|-----|-----|-----|----|-----|
| 71 | 107.5 | 9 | 130 | 110 | 160 | 10 | 3.5 |
| 80 | 115.5 | 10 | 165 | 130 | 200 | 12 | 3.5 |
| 90 | 129.5 | 10 | 165 | 130 | 200 | 12 | 3.5 |
| 100 | 147.5 | 11 | 215 | 180 | 250 | 15 | 4.0 |
| 112 | 147.5 | 11 | 215 | 180 | 250 | 15 | 4.0 |
| 132 | 168 | 12.5 | 265 | 230 | 300 | 15 | 4.0 |

IM B14 (IM3601), IM 3602

| Motor size | HB | LA | M | N | P | S | T |
|------------|-------|----|-----|-----|-----|-----|-----|
| 71 | 107.5 | 8 | 85 | 70 | 105 | M6 | 2.5 |
| 80 | 115.5 | 8 | 100 | 80 | 120 | M6 | 3.0 |
| 90 | 129.5 | 10 | 115 | 95 | 140 | M8 | 3.0 |
| 100 | 147.5 | 10 | 130 | 110 | 160 | M8 | 3.5 |
| 112 | 147.5 | 10 | 130 | 110 | 160 | M8 | 3.5 |
| 132 | 168 | 12 | 165 | 130 | 200 | M10 | 3.5 |

Tolerances:

| | | | |
|-------|---------|-------|---------|
| A, B | + - 0.8 | H | +0 -0.5 |
| D, DA | ISO j6 | N | ISO j6 |
| F, FA | ISO h9 | C, CA | + - 0.8 |

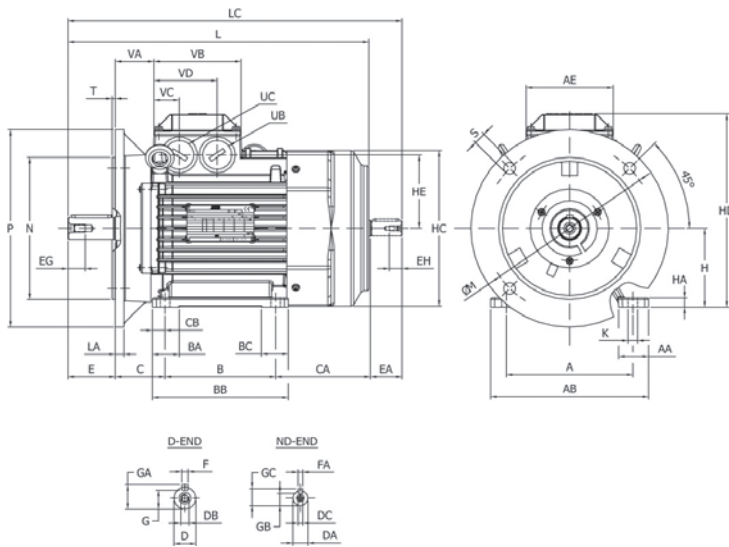
Above table gives the main dimensions in mm.
For detailed drawings please see our web-pages 'www.abb.com/motors&generators' or contact ABB.

Process performance cast iron motors and premium efficiency motors

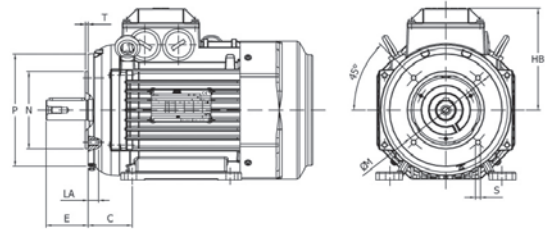
Dimension drawings

Sizes 71-132

Foot- and flange-mounted motor; IM B35 (IM 2001), IM 2002, large flange



Foot- and flange-mounted motor;
IM B34 (IM 2101), IM 2102, small flange



M000444

IM B35 (IM 2001), IM 2002; IM B34 (IM 2101), IM 2102

| Motor size | A | AA | AB | AE | AF | B | BA | BB | BC | C | CA | CB | D-Tol. | DA | DB | DC | E | EA | EG | EH |
|------------|-----|----|-------|-----|-----|-----|----|-----|----|----|-------|------|--------|----|-----|----|----|----|------|------|
| 71 | 112 | 24 | 136 | 105 | 139 | 90 | 24 | 110 | 24 | 45 | 104 | 10 | 14-j6 | 11 | M5 | M4 | 30 | 23 | 12.5 | 10 |
| 80 | 125 | 28 | 154 | 105 | 157 | 100 | 28 | 125 | 28 | 50 | 136 | 12.5 | 19-j6 | 14 | M6 | M5 | 40 | 30 | 16 | 12.5 |
| 90S | 140 | 30 | 170 | 118 | 177 | 100 | 30 | 150 | 55 | 56 | 156.5 | 12.5 | 24-j6 | 14 | M8 | M5 | 50 | 30 | 19 | 12.5 |
| 90L | 140 | 30 | 170 | 118 | 177 | 125 | 30 | 150 | 55 | 56 | 131.5 | 12.5 | 24-j6 | 14 | M8 | M5 | 50 | 30 | 19 | 12.5 |
| 100 | 160 | 38 | 200 | 118 | 197 | 140 | 34 | 172 | 34 | 63 | 123 | 16 | 28-j6 | 19 | M10 | M6 | 60 | 40 | 22 | 16 |
| 112 | 190 | 41 | 230 | 118 | 197 | 140 | 34 | 172 | 34 | 70 | 138 | 16 | 28-j6 | 19 | M10 | M6 | 60 | 40 | 22 | 16 |
| 132S | 216 | 47 | 268.5 | 169 | 261 | 140 | 40 | 212 | 76 | 89 | 228 | 16 | 38-k6 | 24 | M12 | M8 | 80 | 50 | 28 | 19 |
| 132M | 216 | 47 | 268.5 | 169 | 261 | 178 | 40 | 212 | 76 | 89 | 190 | 16 | 38-k6 | 24 | M12 | M8 | 80 | 50 | 28 | 19 |

| Motor size | F | FA | G | GA | GB | GC | H | HA | HC | HD | HE | K | L | LC | UB | UC | VA | VB | VC | VD |
|------------|----|----|------|------|------|------|-----|----|-----|-----|-----|----|-----|-----|---------|---------|----|-----|------|------|
| 71 | 5 | 4 | 11 | 16 | 8.5 | 12.5 | 71 | 9 | 151 | 178 | 62 | 7 | 264 | 292 | M16x1.5 | M16x1.5 | 30 | 105 | 31.5 | 73.5 |
| 80 | 6 | 5 | 15.5 | 21.5 | 11 | 16 | 80 | 10 | 168 | 195 | 69 | 10 | 321 | 356 | M25x1.5 | M25x1.5 | 32 | 105 | 32 | 74 |
| 90 | 8 | 5 | 20 | 27 | 11 | 16 | 90 | 11 | 189 | 219 | 79 | 10 | 357 | 392 | M25x1.5 | M25x1.5 | 42 | 118 | 39 | 81 |
| 100 | 8 | 6 | 24 | 31 | 15.5 | 21.5 | 100 | 12 | 217 | 247 | 94 | 12 | 381 | 426 | M32x1.5 | M32x1.5 | 45 | 118 | 36 | 84 |
| 112 | 8 | 6 | 24 | 31 | 15.5 | 21.5 | 112 | 12 | 229 | 259 | 94 | 12 | 403 | 448 | M32x1.5 | M32x1.5 | 45 | 118 | 36 | 84 |
| 132 | 10 | 8 | 33 | 41 | 20 | 27 | 132 | 14 | 272 | 300 | 116 | 12 | 533 | 588 | M32x1.5 | M32x1.5 | 65 | 169 | 82 | 130 |

IM B35 (IM 2001), IM 2002

| Motor size | LA | M | N | P | S | T |
|------------|------|-----|-----|-----|----|-----|
| 71 | 9 | 130 | 110 | 160 | 10 | 3.5 |
| 80 | 10 | 165 | 130 | 200 | 12 | 3.5 |
| 90 | 10 | 165 | 130 | 200 | 12 | 3.5 |
| 100 | 11 | 215 | 180 | 250 | 15 | 4.0 |
| 112 | 11 | 215 | 180 | 250 | 15 | 4.0 |
| 132 | 12.5 | 265 | 230 | 300 | 15 | 4.0 |

IM B34 (IM 2101), IM 2102

| Motor size | LA | M | N | P | S | T | S | T |
|------------|----|-----|-----|-----|-----|-----|-----|-----|
| 71 | 8 | 85 | 70 | 105 | M6 | 2.5 | M6 | 2.5 |
| 80 | 8 | 100 | 80 | 120 | M6 | 3 | M6 | 3.0 |
| 90 | 10 | 115 | 95 | 140 | M8 | 3 | M8 | 3.0 |
| 100 | 10 | 130 | 110 | 160 | M8 | 3.5 | M8 | 3.5 |
| 112 | 10 | 130 | 110 | 160 | M8 | 3.5 | M8 | 3.5 |
| 132 | 12 | 165 | 130 | 200 | M10 | 3.5 | M10 | 3.5 |

Tolerances:

| | | | |
|-------|---------|-------|---------|
| A, B | + - 0.8 | H | +0 -0.5 |
| D, DA | ISO j6 | N | ISO j6 |
| F, FA | ISO h9 | C, CA | + - 0.8 |

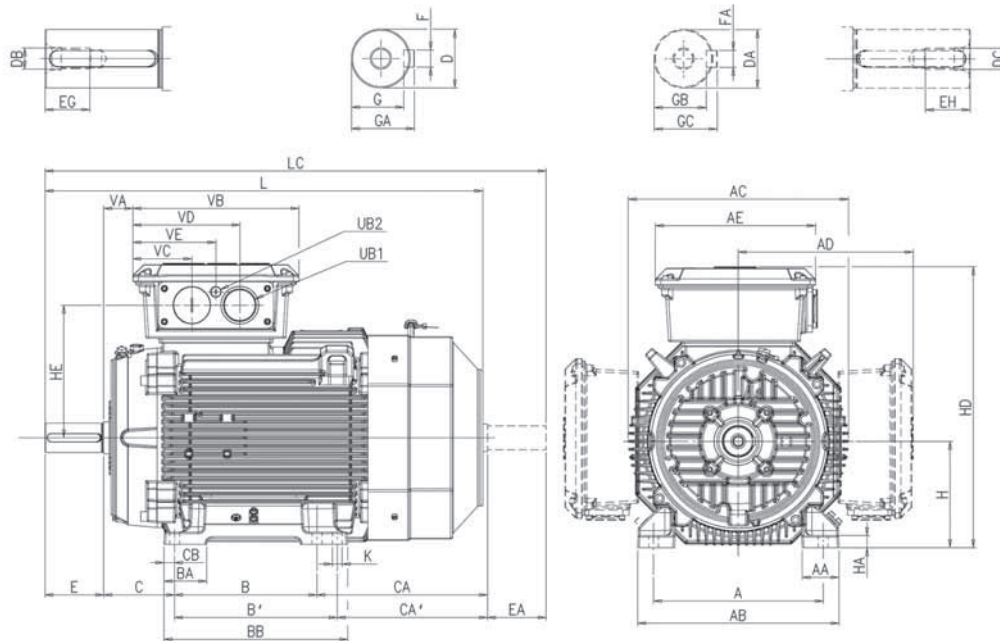
Above table gives the main dimensions in mm.
For detailed drawings please see our web-pages 'www.abb.com/motors&generators' or contact ABB.

Process performance cast iron motors and premium efficiency motors

Dimension drawings

Sizes 160-250

Foot-mounted: IM B3 (IM 1001), IM B6 (IM 1051), IM B7 (IM 1061), IM B8 (IM 1071), IM V5 (IM 1011), IM V6 (IM 1031)



M000404

| Motor size | Poles | A | AA | AB | AC | AD | AE | B | B' | BA | BB | C | CA | CA' | CB | D | DA | DB | DC | E | EA | EG | EH |
|-------------------|-------|-----|----|-----|-----|-----|-----|-----|-----|----|-----|-----|-----|-----|----|----|----|-----|-----|-----|-----|----|----|
| 160 ¹⁾ | 2-8 | 254 | 67 | 310 | 338 | 261 | 257 | 210 | 254 | 69 | 294 | 108 | 164 | 126 | 20 | 42 | 32 | M16 | M12 | 110 | 80 | 36 | 28 |
| 160 ²⁾ | 2-8 | 254 | 67 | 310 | 338 | 261 | 257 | 210 | 254 | 69 | 294 | 108 | 262 | 224 | 20 | 42 | 32 | M16 | M12 | 110 | 80 | 36 | 28 |
| 180 | 2-8 | 279 | 67 | 340 | 381 | 281 | 257 | 241 | 279 | 68 | 317 | 121 | 263 | 225 | 19 | 48 | 32 | M16 | M12 | 110 | 80 | 36 | 28 |
| 200 | 2-8 | 318 | 69 | 378 | 413 | 328 | 300 | 267 | 305 | 80 | 345 | 133 | 314 | 276 | 20 | 55 | 45 | M20 | M16 | 110 | 110 | 42 | 36 |
| 225 | 2 | 356 | 84 | 435 | 460 | 348 | 300 | 286 | 311 | 69 | 351 | 149 | 314 | 289 | 20 | 55 | 55 | M20 | M20 | 110 | 110 | 42 | 42 |
| 225 | 4-8 | 356 | 84 | 435 | 460 | 348 | 300 | 286 | 311 | 69 | 351 | 149 | 314 | 289 | 20 | 60 | 55 | M20 | M20 | 140 | 110 | 42 | 42 |
| 250 | 2 | 406 | 92 | 480 | 508 | 376 | 300 | 311 | 349 | 69 | 392 | 168 | 281 | 243 | 23 | 60 | 55 | M20 | M20 | 140 | 110 | 42 | 42 |
| 250 | 4-8 | 406 | 92 | 480 | 508 | 376 | 300 | 311 | 349 | 69 | 392 | 168 | 281 | 243 | 23 | 65 | 55 | M20 | M20 | 140 | 110 | 42 | 42 |

| Motor size | Poles | F | FA | G | GA | GB | GC | H | HA | HD | HE | K | L | LC | UB1 | UB2 | VA | VB | VC | VD | VE |
|-------------------|-------|----|----|------|------|------|------|-----|----|-----|-----|------|-----|-------|-----|-----|----|-----|-----|-----|-----|
| 160 ¹⁾ | 2-8 | 12 | 10 | 37 | 45 | 27 | 35 | 160 | 23 | 421 | 195 | 14.5 | 584 | 671.5 | M40 | M16 | 49 | 257 | 95 | 162 | 129 |
| 160 ²⁾ | 2-8 | 12 | 10 | 37 | 45 | 27 | 35 | 160 | 23 | 421 | 195 | 14.5 | 681 | 768.5 | M40 | M16 | 49 | 257 | 95 | 162 | 129 |
| 180 | 2-8 | 14 | 10 | 42.5 | 51.5 | 27 | 35 | 180 | 23 | 461 | 215 | 14.5 | 726 | 815 | M40 | M16 | 62 | 257 | 95 | 162 | 129 |
| 200 | 2-8 | 16 | 14 | 49 | 59 | 39.5 | 48.5 | 200 | 23 | 528 | 249 | 18.5 | 821 | 934 | M63 | M16 | 55 | 311 | 111 | 201 | 156 |
| 225 | 2 | 16 | 16 | 49 | 59 | 49 | 59 | 225 | 23 | 573 | 269 | 18.5 | 849 | 971 | M63 | M16 | 48 | 311 | 111 | 201 | 156 |
| 225 | 4-8 | 18 | 16 | 53 | 64 | 49 | 59 | 225 | 23 | 573 | 269 | 18.5 | 879 | 1001 | M63 | M16 | 48 | 311 | 111 | 201 | 156 |
| 250 | 2 | 18 | 16 | 53 | 64 | 49 | 59 | 250 | 23 | 626 | 297 | 24.0 | 884 | 1010 | M63 | M16 | 48 | 311 | 111 | 201 | 156 |
| 250 | 4-8 | 18 | 16 | 58 | 69 | 49 | 59 | 250 | 23 | 626 | 297 | 24.0 | 884 | 1010 | M63 | M16 | 48 | 311 | 111 | 201 | 156 |

Tolerances

| | |
|-------|------------------------------------|
| A, B | ISO js14 |
| C, CA | ± 0.8 |
| D, DA | ISO k6 < Ø 50mm ISO m6 > Ø 50mm |
| F, FA | ISO h9 |
| H | +0 -0.5 |

M3BP:

- ¹⁾ MLA-2, MLB-2, MLC-2, MLA-4, MLA-6, MLA-8 and MLB 8-poles
- ²⁾ MLD-2, MLE-2, MLB-4, MLC-4, MLD-4, MLB-6, MLC-6 and MLC-8 poles

M4BP:

- ¹⁾ MLA-2
- ²⁾ MLB-2, MLC-2, all 4- and 6-poles

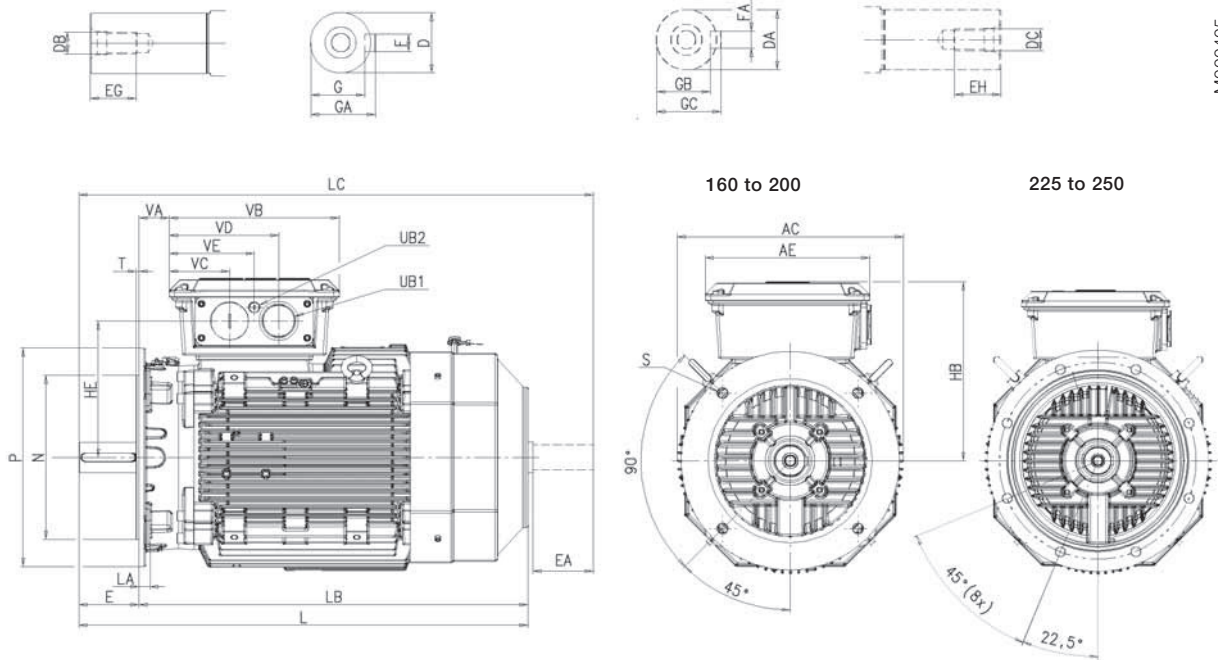
Above table gives the main dimensions in mm.
For detailed drawings please see our web-pages 'www.abb.com/motors&generators' or contact ABB.

Process performance cast iron motors and premium efficiency motors

Dimension drawings

Sizes 160-250

Flange-mounted; IM B5 (IM 3001), V1 (IM 3011), V3 (IM 3031) and IM B14 (IM 3601), V18 (IM 3611), V19 (IM 3631)



M000405

| Motor size | Poles | AC | AE | D | DA | DB | DC | E | EA | EG | EH | F | FA | G | GA | GB | GC | HB | HE |
|-------------------|-------|-----|-----|----|----|-----|-----|-----|-----|----|----|----|----|------|------|------|------|-----|-----|
| 160 ¹⁾ | 2-8 | 338 | 257 | 42 | 32 | M16 | M12 | 110 | 80 | 36 | 28 | 12 | 10 | 37 | 45 | 27 | 35 | 261 | 195 |
| 160 ²⁾ | 2-8 | 338 | 257 | 42 | 32 | M16 | M12 | 110 | 80 | 36 | 28 | 12 | 10 | 37 | 45 | 27 | 35 | 261 | 195 |
| 180 | 2-8 | 381 | 257 | 48 | 32 | M16 | M12 | 110 | 80 | 36 | 28 | 14 | 10 | 42.5 | 51.5 | 27 | 35 | 281 | 215 |
| 200 | 2-8 | 413 | 300 | 55 | 45 | M20 | M16 | 110 | 110 | 42 | 36 | 16 | 14 | 49 | 59 | 39.5 | 48.5 | 328 | 249 |
| 225 | 2 | 460 | 300 | 55 | 55 | M20 | M20 | 110 | 110 | 42 | 42 | 16 | 16 | 49 | 59 | 49 | 59 | 348 | 269 |
| 225 | 4-8 | 460 | 300 | 60 | 55 | M20 | M20 | 140 | 110 | 42 | 42 | 18 | 16 | 53 | 64 | 49 | 59 | 325 | 269 |
| 250 | 2 | 508 | 300 | 60 | 55 | M20 | M20 | 140 | 110 | 42 | 42 | 18 | 16 | 53 | 64 | 49 | 59 | 376 | 297 |
| 250 | 4-8 | 508 | 300 | 65 | 55 | M20 | M20 | 140 | 110 | 42 | 42 | 18 | 16 | 58 | 69 | 49 | 59 | 376 | 297 |

| Motor size | Poles | L | LA | LB | LC | M | N | P | S | T | UB1 | UB2 | VA | VB | VC | VD | VE |
|-------------------|-------|-----|----|-----|-------|-----|-----|-----|----|---|-----|-----|----|-----|-----|-----|-----|
| 160 ¹⁾ | 2-8 | 584 | 20 | 474 | 671.5 | 300 | 250 | 350 | 19 | 5 | M40 | M16 | 49 | 257 | 95 | 162 | 129 |
| 160 ²⁾ | 2-8 | 681 | 20 | 571 | 768.5 | 300 | 250 | 350 | 19 | 5 | M40 | M16 | 49 | 257 | 95 | 162 | 129 |
| 180 | 2-8 | 726 | 15 | 616 | 815 | 300 | 250 | 350 | 19 | 5 | M40 | M16 | 62 | 257 | 95 | 162 | 129 |
| 200 | 2-8 | 821 | 20 | 711 | 934 | 350 | 300 | 400 | 19 | 5 | M63 | M16 | 55 | 311 | 111 | 201 | 156 |
| 225 | 2 | 849 | 20 | 739 | 971 | 400 | 350 | 450 | 19 | 5 | M63 | M16 | 48 | 311 | 111 | 201 | 156 |
| 225 | 4-8 | 879 | 20 | 739 | 1001 | 400 | 350 | 450 | 19 | 5 | M63 | M16 | 48 | 311 | 111 | 201 | 156 |
| 250 | 2 | 884 | 24 | 744 | 1010 | 500 | 450 | 550 | 19 | 5 | M63 | M16 | 48 | 311 | 111 | 201 | 156 |
| 250 | 4-8 | 884 | 24 | 744 | 1010 | 500 | 450 | 550 | 19 | 5 | M63 | M16 | 48 | 311 | 111 | 201 | 156 |

Tolerances

| | |
|--------------|------------------------------------|
| D, DA | ISO k6 < Ø 50mm ISO m6 > Ø 50mm |
| F, FA | ISO h9 |
| N | ISO j6 |

M3BP:

- ¹⁾ MLA-2, MLB-2, MLC-2, MLA-4, MLA-6, MLA-8 and MLB 8-poles
- ²⁾ MLD-2, MLE-2, MLB-4, MLC-4, MLD-4, MLB-6, MLC-6 and MLC-8 poles

M4BP:

- ¹⁾ MLA-2
- ²⁾ MLB-2, MLC-2, all 4- and 6-poles

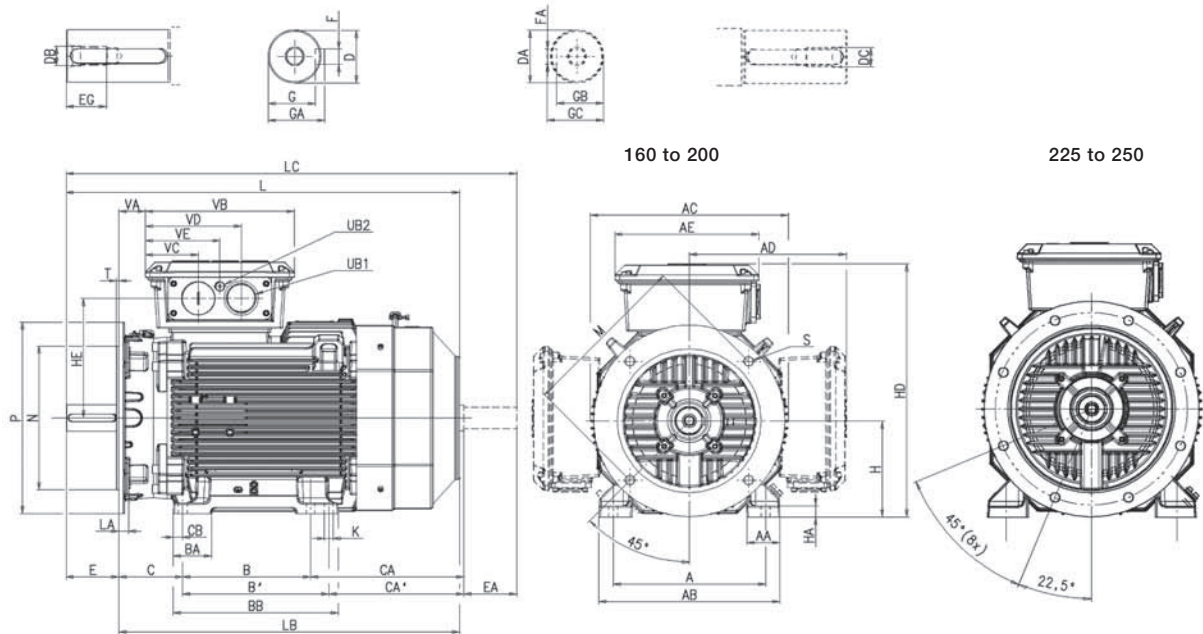
Above table gives the main dimensions in mm.
For detailed drawings please see our web-pages 'www.abb.com/motors&generators' or contact ABB.

Process performance cast iron motors and premium efficiency motors

Dimension drawings

Sizes 160-250

Foot- and flange-mounted: IM B35 (IM 2001), IM V15 (IM 2011), IM V36 (IM 2031)



M000406

| Motor size | Poles | A | AA | AB | AC | AD | AE | B | B' | BA | BB | C | CA | CA' | CB | D | DA | DB | DC | E | EA | EG | EH | F | FA | G |
|-------------------|-------|-----|----|-----|-----|-----|-----|-----|-----|----|-----|-----|-----|-----|----|----|----|-----|-----|-----|-----|----|----|----|----|------|
| 160 ¹⁾ | 2-8 | 254 | 67 | 310 | 338 | 261 | 257 | 210 | 254 | 69 | 294 | 108 | 164 | 126 | 20 | 42 | 32 | M16 | M12 | 110 | 80 | 36 | 28 | 12 | 10 | 37 |
| 160 ²⁾ | 2-8 | 254 | 67 | 310 | 338 | 261 | 257 | 210 | 254 | 69 | 294 | 108 | 262 | 224 | 20 | 42 | 32 | M16 | M12 | 110 | 80 | 36 | 28 | 12 | 10 | 37 |
| 180 | 2-8 | 279 | 67 | 340 | 381 | 281 | 257 | 241 | 279 | 68 | 317 | 121 | 263 | 225 | 19 | 48 | 32 | M16 | M12 | 110 | 80 | 36 | 28 | 14 | 10 | 42.5 |
| 200 | 2-8 | 318 | 69 | 378 | 413 | 328 | 300 | 267 | 305 | 80 | 345 | 133 | 314 | 276 | 20 | 55 | 45 | M20 | M16 | 110 | 110 | 42 | 36 | 16 | 14 | 49 |
| 225 | 2 | 356 | 84 | 435 | 460 | 348 | 300 | 286 | 311 | 69 | 351 | 149 | 314 | 289 | 20 | 55 | 55 | M20 | M20 | 110 | 110 | 42 | 42 | 16 | 16 | 49 |
| 225 | 4-8 | 356 | 84 | 435 | 460 | 348 | 300 | 286 | 311 | 69 | 351 | 149 | 314 | 289 | 20 | 60 | 55 | M20 | M20 | 140 | 110 | 42 | 42 | 18 | 16 | 53 |
| 250 | 2 | 406 | 92 | 480 | 508 | 376 | 300 | 311 | 349 | 69 | 392 | 168 | 281 | 243 | 23 | 60 | 55 | M20 | M20 | 140 | 110 | 42 | 42 | 18 | 16 | 53 |
| 250 | 4-8 | 406 | 92 | 480 | 508 | 376 | 300 | 311 | 349 | 69 | 392 | 168 | 281 | 243 | 23 | 65 | 55 | M20 | M20 | 140 | 110 | 42 | 42 | 18 | 16 | 58 |

| Motor size | Poles | GA | GB | GC | H | HA | HD | HE | K | L | LA | LB | LC | M | N | P | S | T | UB1 | UB2 | VA | VB | VC | VD | VE |
|-------------------|-------|------|------|------|-----|----|-----|-----|------|-----|----|-----|-------|-----|-----|-----|----|---|-----|-----|----|-----|-----|-----|-----|
| 160 ¹⁾ | 2-8 | 45 | 27 | 35 | 160 | 23 | 421 | 195 | 14.5 | 584 | 20 | 474 | 671.5 | 300 | 250 | 350 | 19 | 5 | M40 | M16 | 49 | 257 | 95 | 162 | 129 |
| 160 ²⁾ | 2-8 | 45 | 27 | 35 | 160 | 23 | 421 | 195 | 14.5 | 681 | 20 | 571 | 768.5 | 300 | 250 | 350 | 19 | 5 | M40 | M16 | 49 | 257 | 95 | 162 | 129 |
| 180 | 2-8 | 51.5 | 27 | 35 | 180 | 23 | 461 | 215 | 14.5 | 726 | 15 | 616 | 815 | 300 | 250 | 350 | 19 | 5 | M40 | M16 | 62 | 257 | 95 | 162 | 129 |
| 200 | 2-8 | 59 | 39.5 | 48.5 | 200 | 23 | 528 | 249 | 18.5 | 821 | 20 | 711 | 934 | 350 | 300 | 400 | 19 | 5 | M63 | M16 | 55 | 311 | 111 | 201 | 156 |
| 225 | 2 | 59 | 49 | 59 | 225 | 23 | 573 | 269 | 18.5 | 849 | 20 | 739 | 971 | 400 | 350 | 450 | 19 | 5 | M63 | M16 | 48 | 311 | 111 | 201 | 156 |
| 225 | 4-8 | 64 | 49 | 59 | 225 | 23 | 573 | 269 | 18.5 | 879 | 20 | 739 | 1001 | 400 | 350 | 450 | 19 | 5 | M63 | M16 | 48 | 311 | 111 | 201 | 156 |
| 250 | 2 | 64 | 49 | 59 | 250 | 23 | 626 | 297 | 24.0 | 884 | 24 | 744 | 1010 | 500 | 450 | 550 | 19 | 5 | M63 | M16 | 48 | 311 | 111 | 201 | 156 |
| 250 | 4-8 | 69 | 49 | 59 | 250 | 23 | 626 | 297 | 24.0 | 884 | 24 | 744 | 1010 | 500 | 450 | 550 | 19 | 5 | M63 | M16 | 48 | 311 | 111 | 201 | 156 |

Tolerances

| | |
|-------|--------------------------------------|
| A, B | ISO js14 |
| C, CA | ± 0.8 |
| D, DA | ISO k6 < Ø 50 mm ISO m6 > Ø 50 mm |
| F, FA | ISO h9 |
| H | +0 -0.5 |
| N | ISO j6 |

M3BP:

| | |
|---------------|---|
| ¹⁾ | MLA-2, MLB-2, MLC-2, MLA-4, MLA-6, MLA-8 and MLB 8-poles |
| ²⁾ | MLD-2, MLE-2, MLB-4, MLC-4, MLD-4, MLB-6, MLC-6 and MLC-8 poles |

M4BP:

| | |
|---------------|----------------------------------|
| ¹⁾ | MLA-2 |
| ²⁾ | MLB-2, MLC-2, all 4- and 6-poles |

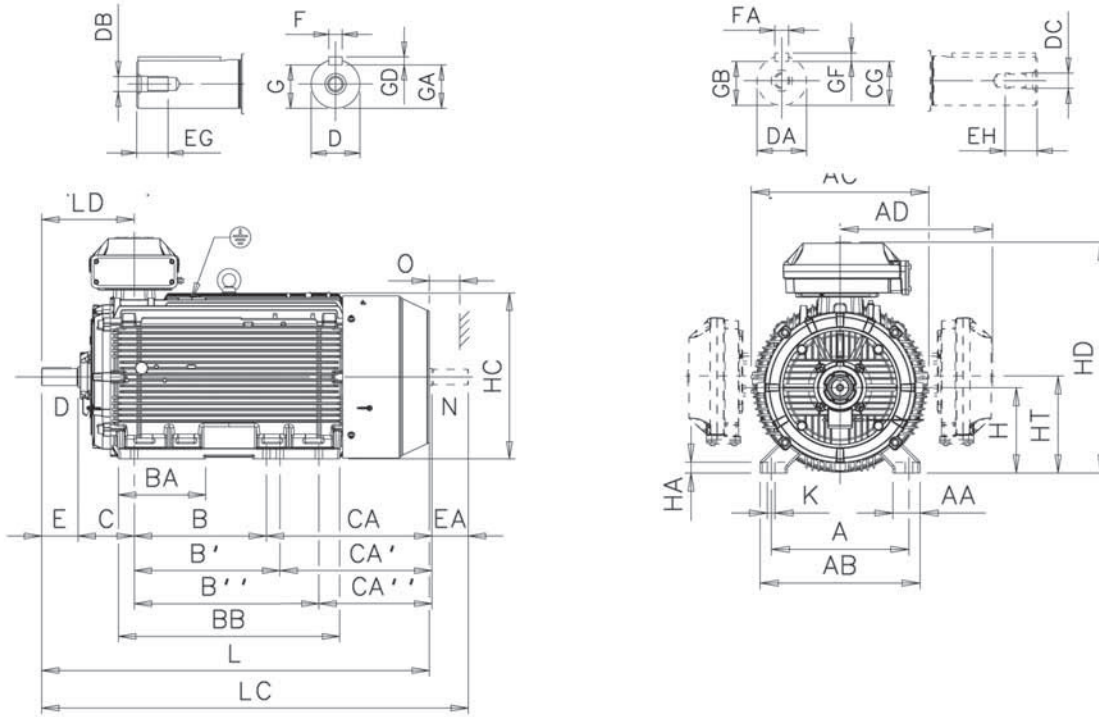
Above table gives the main dimensions in mm.
For detailed drawings please see our web-pages 'www.abb.com/motors&generators' or contact ABB.

Process performance cast iron motors and premium efficiency motors

Dimension drawings

Sizes 280-315

Foot-mounted: IM B3 (IM 1001), IM B6 (IM 1051), IM B7 (IM 1061), IM B8 (IM 1071),
IM V5 (IM 1011), IM V6 (IM 1031)



M000301

| Motor size | Poles | A | AA | AB | AC | AD ¹⁾ | AD ²⁾ | B | B' | B'' | BA | BB | C | CA | CA' | CA'' | D | DA | DB | DC | E | EA | EG | EH |
|------------|-------|-----|-----|-----|-----|------------------|------------------|-----|-----|-----|-----|-----|-----|-----|-----|------|----|----|-----|-----|-----|-----|----|----|
| 280 SM_ | 2 | 457 | 84 | 530 | 577 | 481 | - | 368 | 419 | - | 147 | 506 | 190 | 400 | 349 | - | 65 | 60 | M20 | M20 | 140 | 140 | 40 | 40 |
| | 4-12 | 457 | 84 | 530 | 577 | 481 | - | 368 | 419 | - | 147 | 506 | 190 | 400 | 349 | - | 75 | 65 | M20 | M20 | 140 | 140 | 40 | 40 |
| 315 SM_ | 2 | 508 | 100 | 590 | 654 | 545 | - | 406 | 457 | - | 180 | 558 | 216 | 420 | 369 | - | 65 | 60 | M20 | M20 | 140 | 140 | 40 | 40 |
| | 4-12 | 508 | 100 | 590 | 654 | 545 | - | 406 | 457 | - | 180 | 558 | 216 | 420 | 369 | - | 80 | 75 | M20 | M20 | 170 | 140 | 40 | 40 |
| 315 ML_ | 2 | 508 | 100 | 590 | 654 | 545 | - | 457 | 508 | - | 212 | 669 | 216 | 480 | 429 | - | 65 | 60 | M20 | M20 | 140 | 140 | 40 | 40 |
| | 4-12 | 508 | 100 | 590 | 654 | 545 | - | 457 | 508 | - | 212 | 669 | 216 | 480 | 429 | - | 90 | 75 | M24 | M20 | 170 | 140 | 48 | 40 |
| 315 LK_ | 2 | 508 | 100 | 590 | 654 | 562 | 576 | 508 | 560 | 710 | 336 | 851 | 216 | 635 | 583 | 433 | 65 | 60 | M20 | M20 | 140 | 140 | 40 | 40 |
| | 4-12 | 508 | 100 | 590 | 654 | 562 | 576 | 508 | 560 | 710 | 336 | 851 | 216 | 635 | 583 | 433 | 90 | 75 | M24 | M20 | 170 | 140 | 48 | 40 |

| Motor size | Poles | F | FA | G | GA | GB | GC | GD | GF | H | HA | HC | HD ¹⁾ | HD ²⁾ | HT | K | L | LC | LD | LD | O |
|------------|-------|----|----|------|------|------|------|----|----|-----|----|-----|------------------|------------------|-------|----|------|--------|---------|-----|-----|
| | | | | | | | | | | | | | top-m. | top-m. | | | | top-m. | side-m. | | |
| 280 SM_ | 2 | 18 | 18 | 58 | 69 | 53 | 64 | 11 | 11 | 280 | 31 | 564 | 762 | - | 337.5 | 24 | 1088 | 1238 | 336 | 539 | 100 |
| | 4-12 | 20 | 18 | 67.5 | 79.5 | 58 | 69 | 12 | 11 | 280 | 31 | 564 | 762 | - | 337.5 | 24 | 1088 | 1238 | 336 | 539 | 100 |
| 315 SM_ | 2 | 18 | 18 | 58 | 69 | 53 | 64 | 11 | 11 | 315 | 40 | 638 | 852 | - | 375 | 28 | 1174 | 1322 | 356 | 585 | 115 |
| | 4-12 | 22 | 20 | 71 | 85 | 67.5 | 79.5 | 14 | 12 | 315 | 40 | 638 | 852 | - | 375 | 28 | 1204 | 1352 | 386 | 615 | 115 |
| 315 ML_ | 2 | 18 | 18 | 58 | 69 | 53 | 64 | 11 | 11 | 315 | 40 | 638 | 852 | - | 375 | 28 | 1285 | 1433 | 356 | 640 | 115 |
| | 4-12 | 25 | 20 | 81 | 95 | 67.5 | 79.5 | 14 | 12 | 315 | 40 | 638 | 852 | - | 375 | 28 | 1315 | 1463 | 386 | 670 | 115 |
| 315 LK_ | 2 | 18 | 18 | 58 | 69 | 53 | 64 | 11 | 11 | 315 | 40 | 638 | 870 | 880 | 359 | 28 | 1491 | 1639 | 356 | 721 | 115 |
| | 4-12 | 25 | 20 | 81 | 95 | 67.5 | 79.5 | 14 | 12 | 315 | 40 | 638 | 852 | 880 | 359 | 28 | 1521 | 1669 | 386 | 751 | 115 |

Tolerances:

| | |
|-------|------------------------------------|
| A, B | ± 0,8 |
| C, CA | ± 0,8 |
| D | ISO k6 < ∅ 50mm ISO m6 > ∅ 50mm |
| F | ISO h9 |
| H | +0 -0,5 |
| N | ISO j6 |

¹⁾ Terminal box 370

²⁾ Terminal box 750

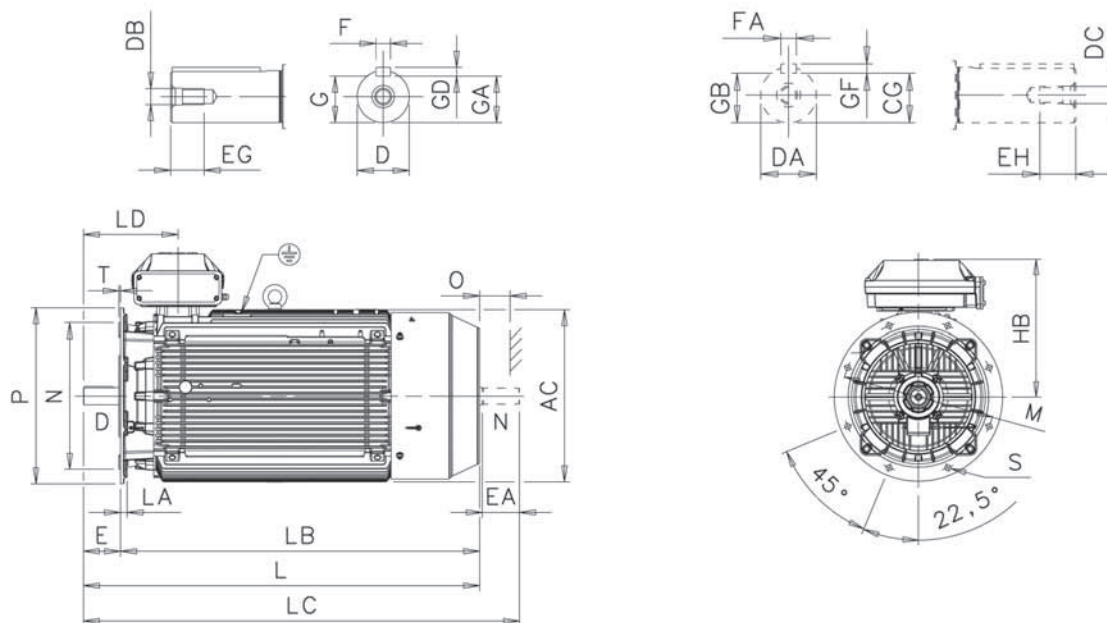
Above table gives the main dimensions in mm.
For detailed drawings please see our web-pages 'www.abb.com/motors&generators' or contact ABB.

Process performance cast iron motors and premium efficiency motors

Dimension drawings

Sizes 280-315

Flange-mounted; IM B5 (IM3001), V1 (IM3011), V3 (IM3031) and IM B14 (IM3601), V18 (IM3611), V19 (IM3631)



M000302

| Motor size | Poles | AC | D | DA | DB | DC | E | EA | EG | EH | F | FA | G | GA | GB | GC | GD | GF |
|------------|-------|-----|----|----|-----|-----|-----|-----|----|----|----|----|------|------|------|------|----|----|
| 280 SM_ | 2 | 577 | 65 | 60 | M20 | M20 | 140 | 140 | 40 | 40 | 18 | 18 | 58 | 69 | 53 | 64 | 11 | 11 |
| | 4-12 | 577 | 75 | 65 | M20 | M20 | 140 | 140 | 40 | 40 | 20 | 18 | 67.5 | 79.5 | 58 | 69 | 12 | 11 |
| 315 SM_ | 2 | 645 | 65 | 60 | M20 | M20 | 140 | 140 | 40 | 40 | 18 | 18 | 58 | 69 | 53 | 64 | 11 | 11 |
| | 4-12 | 645 | 80 | 75 | M20 | M20 | 170 | 140 | 40 | 40 | 22 | 20 | 71 | 85 | 67.5 | 79.5 | 14 | 12 |
| 315 ML_ | 2 | 645 | 65 | 60 | M20 | M20 | 140 | 140 | 40 | 40 | 18 | 18 | 58 | 69 | 53 | 64 | 11 | 11 |
| | 4-12 | 645 | 90 | 75 | M24 | M20 | 170 | 140 | 48 | 40 | 25 | 20 | 81 | 95 | 67.5 | 79.5 | 14 | 12 |
| 315 LK_ | 2 | 645 | 65 | 60 | M20 | M20 | 140 | 140 | 40 | 40 | 18 | 18 | 58 | 69 | 53 | 64 | 11 | 11 |
| | 4-12 | 645 | 90 | 75 | M24 | M20 | 170 | 140 | 48 | 40 | 25 | 20 | 81 | 95 | 67.5 | 79.5 | 14 | 12 |

| Motor size | Poles | HB ¹⁾ | HB ²⁾ | L | LA | LB | LC | LD | M | N | O | P | S | T |
|------------|-------|------------------|------------------|------|----|------|------|-----|-----|-----|-----|-----|----|---|
| 280 SM_ | 2 | 482 | - | 1088 | 23 | 948 | 1238 | 336 | 500 | 450 | 100 | 550 | 18 | 5 |
| | 4-12 | 482 | - | 1088 | 23 | 948 | 1238 | 336 | 500 | 450 | 100 | 550 | 18 | 5 |
| 315 SM_ | 2 | 537 | - | 1174 | 25 | 1034 | 1322 | 356 | 600 | 550 | 115 | 660 | 23 | 6 |
| | 4-12 | 537 | - | 1204 | 25 | 1034 | 1352 | 386 | 600 | 550 | 115 | 660 | 23 | 6 |
| 315 ML_ | 2 | 537 | - | 1285 | 25 | 1145 | 1433 | 356 | 600 | 550 | 115 | 660 | 23 | 6 |
| | 4-12 | 537 | - | 1315 | 25 | 1145 | 1463 | 386 | 600 | 550 | 115 | 660 | 23 | 6 |
| 315 LK_ | 2 | 537 | 565 | 1491 | 25 | 1306 | 1639 | 356 | 600 | 550 | 115 | 660 | 23 | 6 |
| | 4-12 | 537 | 565 | 1521 | 25 | 1306 | 1669 | 386 | 600 | 550 | 115 | 660 | 23 | 6 |

Tolerances:

D, DA ISO m6
 F, FA ISO h9
 N ISO j6 (280 SM_)
 ISO js6 (315_)

¹⁾ Terminal box 370
²⁾ Terminal box 750

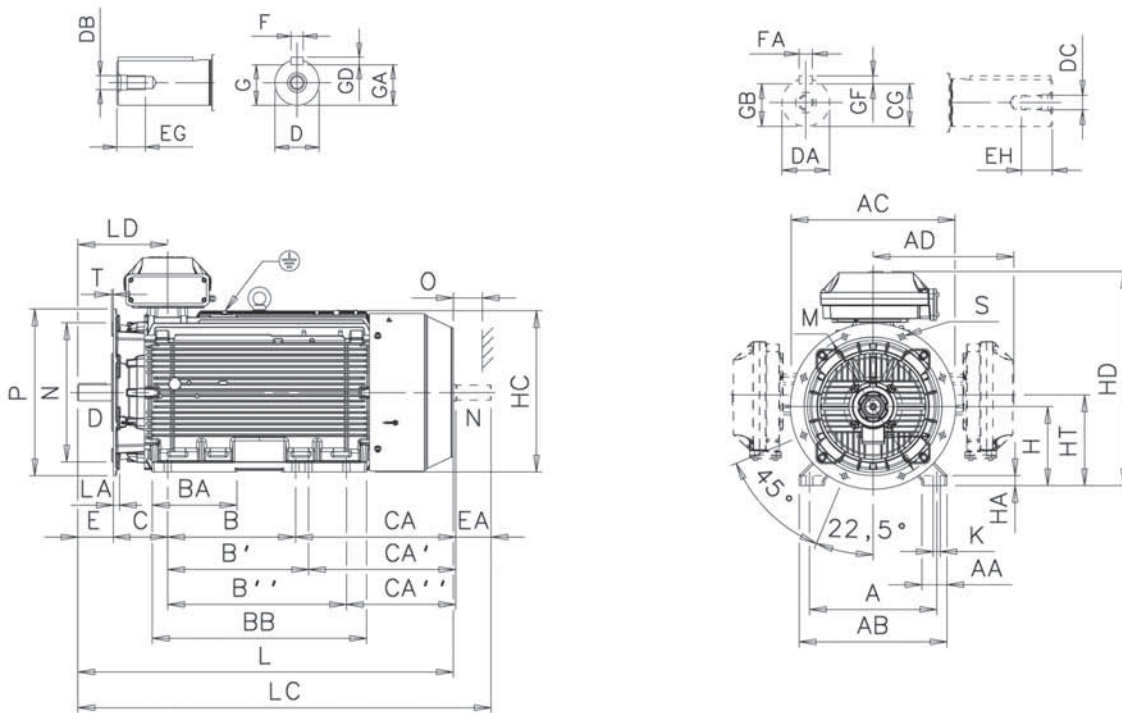
Above table gives the main dimensions in mm.
 For detailed drawings please see our web-pages 'www.abb.com/motors&generators' or contact ABB.

Process performance cast iron motors and premium efficiency motors

Dimension drawings

Sizes 280-315

Foot- and flange-mounted: IM B35 (IM 2001), IM V15 (IM 2011), IM V36 (IM 2031)



| Motor size | Poles | A | AA | AB | AC | AD ¹⁾ | AD ²⁾ | B | B' | B'' | BA | BB | C | CA | CA' CA'' | D | DA | DB | DC | E | EA | EG | EH | F | FA | G | |
|------------|-------|-----|-----|-----|-----|------------------|------------------|-----|-----|-----|-----|-----|-----|-----|----------|-----|----|----|-----|-----|-----|-----|----|----|----|----|------|
| 280 SM_2 | 2 | 457 | 84 | 530 | 577 | 481 | - | 368 | 419 | - | 147 | 506 | 190 | 400 | 349 | - | 65 | 60 | M20 | M20 | 140 | 140 | 40 | 40 | 18 | 18 | 58 |
| | 4-12 | 457 | 84 | 530 | 577 | 481 | - | 368 | 419 | - | 147 | 506 | 190 | 400 | 349 | - | 75 | 65 | M20 | M20 | 140 | 140 | 40 | 40 | 20 | 18 | 67.5 |
| 315 SM_2 | 2 | 508 | 100 | 590 | 654 | 545 | - | 406 | 457 | - | 180 | 558 | 216 | 420 | 369 | - | 65 | 60 | M20 | M20 | 140 | 140 | 40 | 40 | 18 | 18 | 58 |
| | 4-12 | 508 | 100 | 590 | 654 | 545 | - | 406 | 457 | - | 180 | 558 | 216 | 420 | 369 | - | 80 | 75 | M20 | M20 | 170 | 140 | 40 | 40 | 22 | 20 | 71 |
| 315 ML_2 | 2 | 508 | 100 | 590 | 654 | 545 | - | 457 | 508 | - | 212 | 669 | 216 | 480 | 429 | - | 65 | 60 | M20 | M20 | 140 | 140 | 40 | 40 | 18 | 18 | 58 |
| | 4-12 | 508 | 100 | 590 | 654 | 545 | - | 457 | 508 | - | 212 | 669 | 216 | 480 | 429 | - | 90 | 75 | M24 | M20 | 170 | 140 | 48 | 40 | 25 | 20 | 81 |
| 315 LK_2 | 2 | 508 | 100 | 590 | 654 | 562 | 576 | 508 | 560 | 710 | 336 | 851 | 216 | 635 | 583 | 433 | 65 | 60 | M20 | M20 | 140 | 140 | 40 | 40 | 18 | 18 | 58 |
| | 4-12 | 508 | 100 | 590 | 654 | 562 | 576 | 508 | 560 | 710 | 336 | 851 | 216 | 635 | 583 | 433 | 90 | 75 | M24 | M20 | 170 | 140 | 48 | 40 | 25 | 20 | 81 |

| Motor size | Poles | GA | GB | GC | GD | GF | H | HA | HC | HD ¹⁾ | HD ²⁾ | HT | K | L | LA | LC | LD | LD | M | N | P | S | T | O |
|------------|-------|------|------|------|----|----|-----|----|-----|------------------|------------------|-------|----|------|----|------|-----|-----|---------|-----|-----|----|---|-----|
| | | | | | | | | | | top-m. | top-m. | | | | | | | | side-m. | | | | | |
| 280 SM_2 | 2 | 69 | 53 | 64 | 11 | 11 | 280 | 31 | 564 | 762 | - | 337.5 | 24 | 1088 | 23 | 1238 | 336 | 539 | 500 | 450 | 550 | 18 | 5 | 100 |
| | 4-12 | 79.5 | 58 | 69 | 12 | 11 | 280 | 31 | 564 | 762 | - | 337.5 | 24 | 1088 | 23 | 1238 | 336 | 539 | 500 | 450 | 550 | 18 | 5 | 100 |
| 315 SM_2 | 2 | 69 | 53 | 64 | 11 | 11 | 315 | 40 | 638 | 852 | - | 375 | 28 | 1174 | 25 | 1322 | 356 | 585 | 600 | 550 | 660 | 23 | 6 | 115 |
| | 4-12 | 85 | 67.5 | 79.5 | 14 | 12 | 315 | 40 | 638 | 852 | - | 375 | 28 | 1204 | 25 | 1352 | 386 | 615 | 600 | 550 | 660 | 23 | 6 | 115 |
| 315 ML_2 | 2 | 69 | 53 | 64 | 11 | 11 | 315 | 40 | 638 | 852 | - | 375 | 28 | 1285 | 25 | 1433 | 356 | 640 | 600 | 550 | 660 | 23 | 6 | 115 |
| | 4-12 | 95 | 67.5 | 79.5 | 14 | 12 | 315 | 40 | 638 | 852 | - | 375 | 28 | 1315 | 25 | 1463 | 386 | 670 | 600 | 550 | 660 | 23 | 6 | 115 |
| 315 LK_2 | 2 | 69 | 53 | 64 | 11 | 11 | 315 | 40 | 638 | 852 | 880 | 359 | 28 | 1491 | 25 | 1639 | 356 | 721 | 600 | 550 | 660 | 23 | 6 | 115 |
| | 4-12 | 95 | 67.5 | 79.5 | 14 | 12 | 315 | 40 | 638 | 852 | 880 | 359 | 28 | 1521 | 25 | 1669 | 386 | 751 | 600 | 550 | 660 | 23 | 6 | 115 |

Tolerances:

- A, B ± 0,8
- D ISO m6
- F ISO h9
- H +0 -1.0
- N ISO j6 (280 SM_)
ISO js6 (315_)
- C ± 0.8

- ¹⁾ Terminal box 370
- ²⁾ Terminal box 750

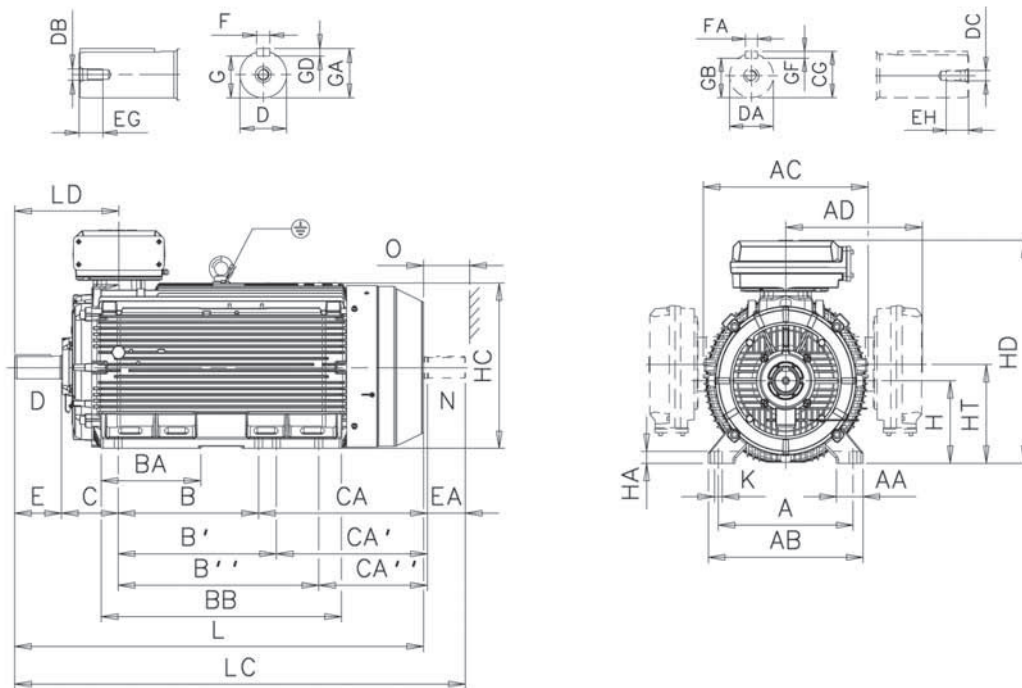
Above table gives the main dimensions in mm.
For detailed drawings please see our web-pages 'www.abb.com/motors&generators' or contact ABB.

Process performance cast iron motors and premium efficiency motors

Dimension drawings

Sizes 355-450

Foot-mounted: IM B3 (IM 1001), IM B6 (IM 1051), IM B7 (IM 1061), IM B8 (IM 1071), IM V5 (IM 1011), IM V6 (IM 1031)



M000304

| Motor size | Poles | A | AA | AB | AC | AD ¹⁾ | AD ²⁾ | B | B' | B'' | BA | BB | C | CA | CA' | CA'' | D | DA | DB | DC | E | EA | EG | EH |
|----------------------|-------|-----|-----|-----|-----|------------------|------------------|------|------|------|-----|------|-----|-----|-----|------|-----|-----|-----|-----|-----|-----|----|----|
| 355 SM ₂ | 2 | 610 | 120 | 700 | 746 | 604 | 618 | 500 | 560 | - | 221 | 722 | 254 | 525 | 465 | - | 70 | 70 | M20 | M20 | 140 | 140 | 42 | 40 |
| | 4-12 | 610 | 120 | 700 | 746 | 604 | 618 | 500 | 560 | - | 221 | 722 | 254 | 525 | 465 | - | 100 | 90 | M24 | M24 | 210 | 170 | 51 | 51 |
| 355 ML ₂ | 2 | 610 | 120 | 700 | 746 | 604 | 618 | 560 | 630 | - | 267 | 827 | 254 | 500 | 570 | - | 70 | 70 | M20 | M20 | 140 | 140 | 42 | 40 |
| | 4-12 | 610 | 120 | 700 | 746 | 604 | 618 | 560 | 630 | - | 267 | 827 | 254 | 500 | 570 | - | 100 | 90 | M24 | M24 | 210 | 170 | 51 | 51 |
| 355 LK ₄₎ | 2 | 610 | 120 | 700 | 746 | 604 | 618 | 630 | 710 | 900 | 447 | 1077 | 254 | 750 | 670 | 480 | 70 | 70 | M20 | M20 | 140 | 140 | 42 | 40 |
| | 4-12 | 610 | 120 | 700 | 746 | 604 | 618 | 630 | 710 | 900 | 447 | 1077 | 254 | 750 | 670 | 480 | 100 | 90 | M24 | M24 | 210 | 170 | 51 | 51 |
| 400 L ₂ | 2 | 710 | 150 | 840 | 834 | - | 660 | 900 | 1000 | - | 410 | 1156 | 224 | 567 | 467 | - | 80 | 70 | M20 | M20 | 170 | 140 | 42 | 40 |
| | 4-12 | 710 | 150 | 840 | 834 | - | 660 | 900 | 1000 | - | 410 | 1156 | 224 | 567 | 467 | - | 110 | 90 | M24 | M24 | 210 | 170 | 50 | 51 |
| 400 LK ₄₎ | 2 | 686 | 150 | 840 | 834 | - | 660 | 710 | 800 | 900 | 410 | 1156 | 280 | 701 | 611 | 511 | 80 | 70 | M20 | M20 | 170 | 140 | 42 | 40 |
| | 4-12 | 686 | 150 | 840 | 834 | - | 660 | 710 | 800 | 900 | 410 | 1156 | 280 | 701 | 611 | 511 | 100 | 90 | M24 | M24 | 210 | 170 | 50 | 51 |
| 450 L ₂ | 2 | 800 | 160 | 950 | 966 | - | - | 1000 | 1120 | 1250 | 450 | 1420 | 250 | - | - | - | 80 | - | M20 | - | 170 | - | 42 | - |
| | 4-12 | 800 | 160 | 950 | 966 | - | - | 1000 | 1120 | 1250 | 450 | 1420 | 250 | 737 | 617 | 487 | 120 | 100 | M24 | M24 | 210 | 210 | 50 | 50 |

| Motor size | Poles | F | FA | G | GA | GB | GC | GD | GF | H | HA | HC | HD ¹⁾ | HD ²⁾ | HD ³⁾ | HD | K | L | LC | LD | LD | O |
|----------------------|-------|----|----|------|------|------|------|----|----|-----|----|-----|------------------|------------------|------------------|---------|----|------|------|--------|---------|-----|
| | | | | | | | | | | | | | top-m. | top-m. | top-m. | side-m. | | | | top-m. | side-m. | |
| 355 SM ₂ | 2 | 20 | 20 | 62.5 | 74.5 | 62.5 | 74.5 | 12 | 12 | 355 | 45 | 725 | 944 | 958 | - | 843 | 35 | 1409 | 1559 | 397 | 679 | 130 |
| | 4-12 | 28 | 25 | 90 | 106 | 81 | 95 | 16 | 14 | 355 | 45 | 725 | 944 | 958 | - | 843 | 35 | 1479 | 1659 | 467 | 750 | 130 |
| 355 ML ₂ | 2 | 20 | 20 | 62.5 | 74.5 | 62.5 | 74.5 | 12 | 12 | 355 | 45 | 725 | 944 | 958 | - | 843 | 35 | 1514 | 1664 | 397 | 732 | 130 |
| | 4-12 | 28 | 25 | 90 | 106 | 81 | 95 | 16 | 14 | 355 | 45 | 725 | 944 | 958 | - | 843 | 35 | 1584 | 1764 | 467 | 802 | 130 |
| 355 LK ₄₎ | 2 | 20 | 20 | 62.5 | 74.5 | 62.5 | 74.5 | 12 | 12 | 355 | 45 | 725 | 944 | 958 | - | 843 | 35 | 1764 | 1914 | 397 | 857 | 130 |
| | 4-12 | 28 | 25 | 90 | 106 | 81 | 95 | 16 | 14 | 355 | 45 | 725 | 944 | 958 | - | 843 | 35 | 1834 | 2014 | 467 | 927 | 130 |
| 400 L ₂ | 2 | 22 | 20 | 71 | 85 | 67.5 | 79.5 | 12 | 12 | 400 | 45 | 814 | - | 1045 | - | 943 | 35 | 1851 | 2001 | 458 | 909 | 150 |
| | 4-12 | 28 | 25 | 90 | 116 | 81 | 95 | 16 | 14 | 400 | 45 | 814 | - | 1045 | - | 943 | 35 | 1891 | 2071 | 498 | 949 | 150 |
| 400 LK ₄₎ | 2 | 22 | 20 | 71 | 85 | 67.5 | 79.5 | 14 | 12 | 400 | 45 | 814 | - | 1045 | - | 943 | 35 | 1851 | 2001 | 458 | 909 | 150 |
| | 4-12 | 28 | 25 | 90 | 106 | 81 | 95 | 16 | 14 | 400 | 45 | 814 | - | 1045 | - | 943 | 35 | 1891 | 2071 | 498 | 949 | 150 |
| 450 L ₂ | 2 | 22 | - | 71 | 85 | - | - | 14 | - | 450 | 81 | 933 | - | 1169 | 1231 | - | 42 | 2147 | - | 485 | - | 180 |
| | 4-12 | 32 | 28 | 109 | 127 | 100 | 116 | 18 | 16 | 450 | 81 | 933 | - | 1169 | 1231 | - | 42 | 2187 | 2407 | 525 | - | 180 |

Tolerances:

- A, B ± 0,8
- D, DA ISO m6
- F, FA ISO h9
- H +0 -1.0
- N ISO j6
- C, CA ± 0.8

- ¹⁾ Terminal box 370
- ²⁾ Terminal box 750
- ³⁾ Terminal box 1200
- ⁴⁾ Size with alternative dimensions

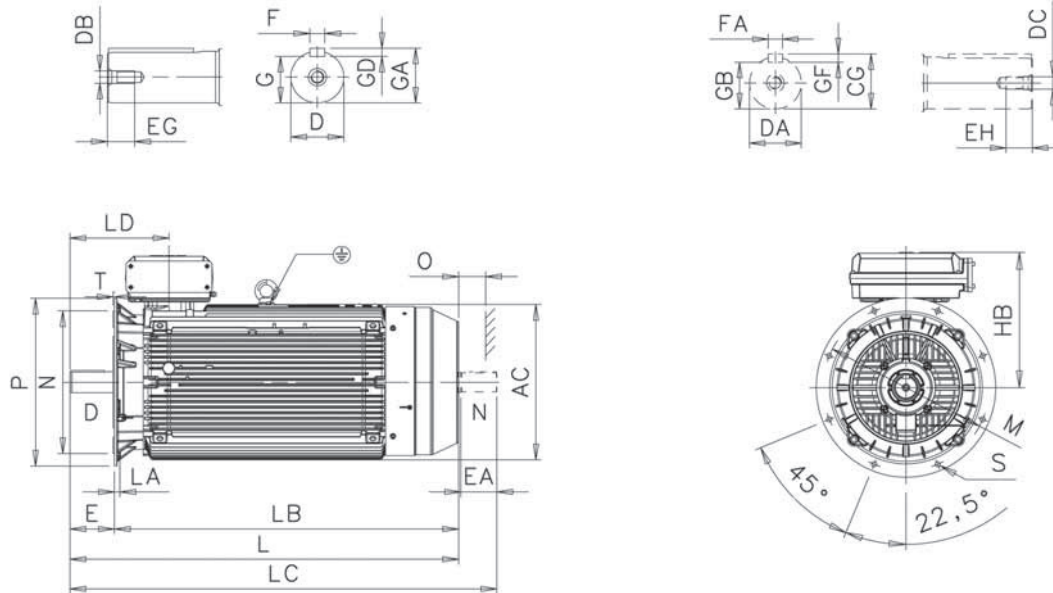
Above table gives the main dimensions in mm.
For detailed drawings please see our web-pages 'www.abb.com/motors&generators' or contact ABB.

Process performance cast iron motors and premium efficiency motors

Dimension drawings

Sizes 355-450

Flange-mounted; IM B5 (IM 3001), IM V1 (IM 3011), IM V3 (IM 3031), IM B14 (IM 3601), IM V18 (IM 3611) and IM V19 (IM 3631)



| Motor size | Poles | AC | D | DA | DB | DC | E | EA | EG | EH | F | FA | G | GA | GB | GC | GD | GF |
|-----------------------|-------|-----|-----|-----|-----|-----|-----|-----|----|----|----|----|------|------|------|------|----|----|
| 355 SM_ | 2 | 740 | 70 | 70 | M20 | M20 | 140 | 140 | 42 | 40 | 20 | 20 | 62.5 | 74.5 | 62.5 | 74.5 | 12 | 12 |
| | 4-12 | 740 | 100 | 90 | M24 | M24 | 210 | 170 | 51 | 51 | 28 | 25 | 90 | 106 | 81 | 95 | 16 | 14 |
| 355 ML_ | 2 | 740 | 70 | 70 | M20 | M20 | 140 | 140 | 42 | 40 | 20 | 20 | 62.5 | 74.5 | 62.5 | 74.5 | 12 | 12 |
| | 4-12 | 740 | 100 | 90 | M24 | M24 | 210 | 170 | 51 | 51 | 28 | 25 | 90 | 106 | 81 | 95 | 16 | 14 |
| 355 LK_ ⁴⁾ | 2 | 740 | 70 | 70 | M20 | M20 | 140 | 140 | 42 | 40 | 20 | 20 | 62.5 | 74.5 | 62.5 | 74.5 | 12 | 12 |
| | 4-12 | 740 | 100 | 90 | M24 | M24 | 210 | 170 | 51 | 51 | 28 | 25 | 90 | 106 | 81 | 95 | 16 | 14 |
| 400 L_ | 2 | 814 | 80 | 70 | M20 | M20 | 170 | 140 | 42 | 40 | 22 | 20 | 71 | 85 | 67.5 | 79.5 | 12 | 12 |
| | 4-12 | 814 | 110 | 90 | M24 | M24 | 210 | 170 | 50 | 50 | 28 | 25 | 100 | 116 | 81 | 95 | 16 | 14 |
| 400 LK_ ⁴⁾ | 2 | 814 | 80 | 70 | M20 | M20 | 170 | 140 | 42 | 40 | 22 | 20 | 71 | 85 | 67.5 | 79.5 | 12 | 12 |
| | 4-12 | 814 | 100 | 90 | M24 | M24 | 210 | 170 | 50 | 50 | 28 | 25 | 90 | 106 | 81 | 95 | 16 | 14 |
| 450 L_ | 2 | 966 | 80 | - | M20 | - | 170 | - | 42 | - | 22 | - | 71 | 85 | - | - | 14 | - |
| | 4-12 | 966 | 120 | 100 | M24 | M24 | 210 | 210 | 50 | 50 | 32 | 28 | 109 | 127 | 100 | 116 | 18 | 16 |

| Motor size | Poles | HB ¹⁾ | HB ²⁾ | HB ³⁾ | L | LA | LB | LC | LD ¹⁾ | LD ²⁾ | LD ³⁾ | M | N | O | P | S | T |
|-----------------------|-------|------------------|------------------|------------------|------|----|------|------|------------------|------------------|------------------|------|------|-----|------|----|---|
| 355 SM_ | 2 | 589 | 603 | - | 1409 | 25 | 1269 | 1559 | 397 | 397 | - | 740 | 680 | 130 | 800 | 23 | 6 |
| | 4-12 | 589 | 603 | - | 1479 | 25 | 1269 | 1659 | 467 | 467 | - | 740 | 680 | 130 | 800 | 23 | 6 |
| 355 ML_ | 2 | 589 | 603 | - | 1514 | 25 | 1374 | 1664 | 397 | 397 | - | 740 | 680 | 130 | 800 | 23 | 6 |
| | 4-12 | 589 | 603 | - | 1584 | 25 | 1374 | 1764 | 467 | 467 | - | 740 | 680 | 130 | 800 | 23 | 6 |
| 355 LK_ ⁴⁾ | 2 | 589 | 603 | - | 1764 | 25 | 1624 | 1914 | 397 | 397 | - | 740 | 680 | 130 | 800 | 23 | 6 |
| | 4-12 | 589 | 603 | - | 1834 | 25 | 1624 | 2014 | 467 | 467 | - | 740 | 680 | 130 | 800 | 23 | 6 |
| 400 L_ | 2 | - | 645 | - | 1851 | 26 | 1681 | 2001 | 458 | 458 | - | 940 | 880 | 150 | 1000 | 28 | 6 |
| | 4-12 | - | 645 | - | 1891 | 26 | 1681 | 2071 | 498 | 498 | - | 940 | 880 | 150 | 1000 | 28 | 6 |
| 400 LK_ ⁴⁾ | 2 | - | 645 | - | 1851 | 26 | 1681 | 2001 | 458 | 458 | - | 740 | 680 | 150 | 800 | 24 | 6 |
| | 4-12 | - | 645 | - | 1891 | 26 | 1681 | 2071 | 498 | 498 | - | 740 | 680 | 150 | 800 | 24 | 6 |
| 450 L_ | 2 | - | 719 | 843 | 2147 | 33 | 1937 | - | - | 485 | 520 | 1080 | 1000 | 180 | 1150 | 28 | 6 |
| | 4-12 | - | 719 | 843 | 2187 | 33 | 1977 | 2407 | - | 525 | 560 | 1080 | 1000 | 180 | 1150 | 28 | 6 |

Tolerances:

D, DA ISO m6
N ISO js6 (315_)
F, FA ISO h9

- ¹⁾ Terminal box 370
- ²⁾ Terminal box 750
- ³⁾ Terminal box 1200
- ⁴⁾ Size with alternative dimensions

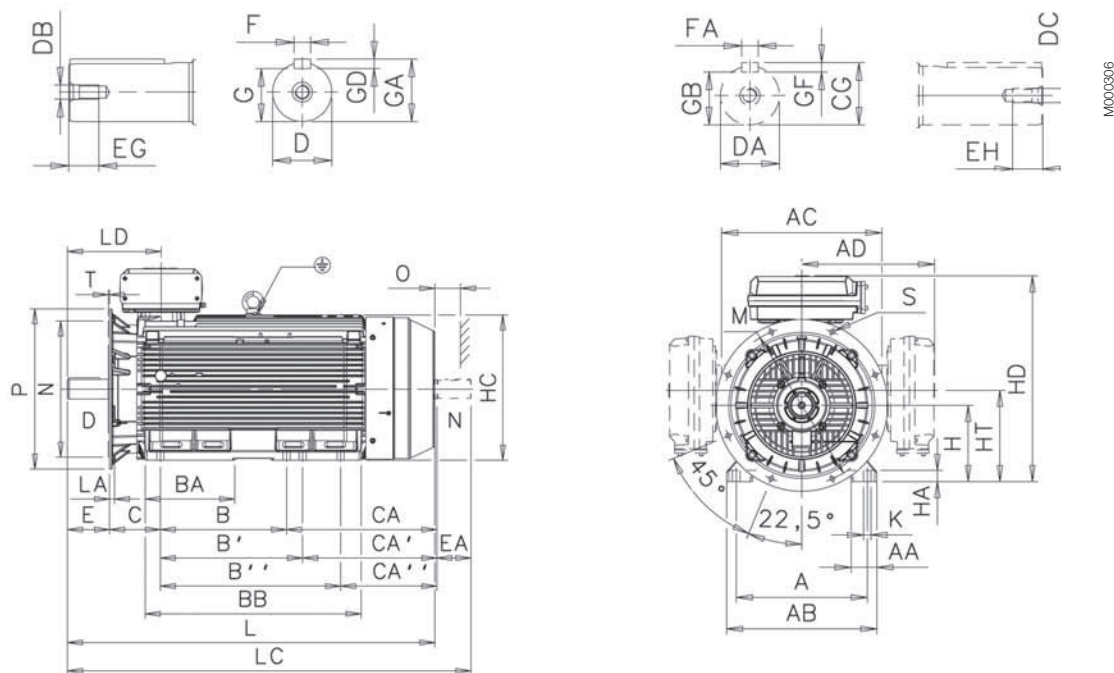
Above table gives the main dimensions in mm.
For detailed drawings please see our web-pages 'www.abb.com/motors&generators' or contact ABB.

Process performance cast iron motors and premium efficiency motors

Dimension drawings

Sizes 355-450

Foot- and flange-mounted: IM B35 (IM 2001), IM V15 (IM 2011), IM V36 (IM 2031)



| Motor size | Poles | A | AA | AB | AC | AD ¹⁾ | AD ²⁾ | B | B' | B'' | BA | BB | C | CA | CA' | CA'' | D | DA | DB | DC | E | EA | EG | EH | F | FA | G |
|-----------------------|-------|-----|-----|-----|-----|------------------|------------------|------|------|------|-----|------|-----|-----|-----|------|-----|-----|-----|-----|-----|-----|----|----|----|----|------|
| 355 SM ₋ | 2 | 610 | 120 | 700 | 746 | 604 | 618 | 500 | 560 | - | 221 | 722 | 254 | 525 | 465 | - | 70 | 70 | M20 | M20 | 140 | 140 | 42 | 40 | 20 | 20 | 62.5 |
| | 4-12 | 610 | 120 | 700 | 746 | 604 | 618 | 500 | 560 | - | 221 | 722 | 254 | 525 | 465 | - | 100 | 90 | M24 | M24 | 210 | 170 | 51 | 48 | 28 | 25 | 90 |
| 355 ML ₋ | 2 | 610 | 120 | 700 | 746 | 604 | 618 | 560 | 630 | - | 267 | 827 | 254 | 500 | 570 | - | 70 | 70 | M20 | M20 | 140 | 140 | 42 | 40 | 20 | 20 | 62.5 |
| | 4-12 | 610 | 120 | 700 | 746 | 604 | 618 | 560 | 630 | - | 267 | 827 | 254 | 500 | 570 | - | 100 | 90 | M24 | M24 | 210 | 170 | 51 | 48 | 28 | 25 | 90 |
| 355 LK ₋₄₎ | 2 | 610 | 120 | 700 | 746 | 604 | 618 | 630 | 710 | 900 | 447 | 1077 | 254 | 750 | 670 | 480 | 70 | 70 | M20 | M20 | 140 | 140 | 42 | 40 | 20 | 20 | 62.5 |
| | 4-12 | 610 | 120 | 700 | 746 | 604 | 618 | 630 | 710 | 900 | 447 | 1077 | 254 | 750 | 670 | 480 | 100 | 90 | M24 | M24 | 210 | 170 | 51 | 48 | 28 | 25 | 90 |
| 400 L ₋ | 2 | 710 | 150 | 840 | 834 | - | 660 | 900 | 1000 | - | 410 | 1156 | 224 | 567 | 467 | - | 80 | 70 | M20 | M20 | 170 | 140 | 42 | 40 | 22 | 20 | 71 |
| | 4-12 | 710 | 150 | 840 | 834 | - | 660 | 900 | 1000 | - | 410 | 1156 | 224 | 567 | 467 | - | 110 | 90 | M24 | M24 | 210 | 170 | 50 | 50 | 28 | 25 | 100 |
| 400 LK ₋₄₎ | 2 | 686 | 150 | 840 | 834 | - | 660 | 710 | 800 | 900 | 410 | 1156 | 280 | 701 | 611 | 511 | 80 | 70 | M20 | M20 | 170 | 140 | 42 | 40 | 22 | 20 | 71 |
| | 4-12 | 686 | 150 | 840 | 834 | - | 660 | 710 | 800 | 900 | 410 | 1156 | 280 | 701 | 611 | 511 | 100 | 90 | M24 | M24 | 210 | 170 | 50 | 50 | 28 | 25 | 90 |
| 450 L ₋ | 2 | 800 | 160 | 950 | 966 | - | - | 1000 | 1120 | 1250 | 450 | 1420 | 250 | - | - | - | 80 | - | M20 | - | 170 | - | - | - | 22 | - | 71 |
| | 4-12 | 800 | 160 | 950 | 966 | - | - | 1000 | 1120 | 1250 | 450 | 1420 | 250 | 737 | 617 | 487 | 120 | 100 | M24 | M24 | 210 | 210 | 50 | 50 | 32 | 28 | 109 |

| Motor size | Poles | GA | GB | GC | GD | GF | H | HA | HC | HD ¹⁾ | HD ²⁾ | HD ³⁾ | HD | K | L | LA | LC | LD ¹⁾ | LD ²⁾ | LD ³⁾ | LD | M | N | O | P | S | T | | | |
|-----------------------|-------|------|------|------|----|----|-----|----|-----|------------------|------------------|------------------|--------|----|--------|----|--------|------------------|------------------|------------------|--------|------|--------|-----|---------|----|---|--|--|--|
| | | | | | | | | | | | | | top-m. | | top-m. | | top-m. | | side-m. | | top-m. | | top-m. | | side-m. | | | | | |
| 355 SM ₋ | 2 | 74.5 | 62.5 | 74.5 | 12 | 12 | 355 | 45 | 725 | 944 | 958 | - | 843 | 35 | 1409 | 25 | 1559 | 397 | 397 | - | 679 | 740 | 680 | 130 | 800 | 23 | 6 | | | |
| | 4-12 | 106 | 81 | 95 | 16 | 14 | 355 | 45 | 725 | 944 | 958 | - | 843 | 35 | 1479 | 25 | 1659 | 467 | 467 | - | 750 | 740 | 680 | 130 | 800 | 23 | 6 | | | |
| 355 ML ₋ | 2 | 74.5 | 62.5 | 74.5 | 12 | 12 | 355 | 45 | 725 | 944 | 958 | - | 843 | 35 | 1514 | 25 | 1664 | 397 | 397 | - | 732 | 740 | 680 | 130 | 800 | 23 | 6 | | | |
| | 4-12 | 106 | 81 | 95 | 16 | 14 | 355 | 45 | 725 | 944 | 958 | - | 843 | 35 | 1584 | 25 | 1764 | 467 | 467 | - | 802 | 740 | 680 | 130 | 800 | 23 | 6 | | | |
| 355 LK ₋₄₎ | 2 | 74.5 | 62.5 | 74.5 | 12 | 12 | 355 | 45 | 725 | 944 | 958 | - | 843 | 35 | 1764 | 25 | 1914 | 397 | 397 | - | 857 | 740 | 680 | 130 | 800 | 23 | 6 | | | |
| | 4-12 | 106 | 81 | 95 | 16 | 14 | 355 | 45 | 725 | 944 | 958 | - | 843 | 35 | 1834 | 25 | 2014 | 467 | 467 | - | 927 | 740 | 680 | 130 | 800 | 23 | 6 | | | |
| 400 L ₋ | 2 | 85 | 67.5 | 79.5 | 12 | 12 | 400 | 45 | 814 | - | 1045 | - | 943 | 35 | 1851 | 26 | 2001 | 458 | 458 | - | 909 | 940 | 880 | 150 | 1000 | 28 | 6 | | | |
| | 4-12 | 116 | 81 | 95 | 16 | 14 | 400 | 45 | 814 | - | 1045 | - | 943 | 35 | 1891 | 26 | 2071 | 498 | 498 | - | 949 | 940 | 880 | 150 | 1000 | 28 | 6 | | | |
| 400 LK ₋₄₎ | 2 | 85 | 67.5 | 79.5 | 12 | 12 | 400 | 45 | 814 | - | 1045 | - | 943 | 35 | 1851 | 26 | 2001 | 458 | 458 | - | 909 | 740 | 680 | 150 | 800 | 24 | 6 | | | |
| | 4-12 | 106 | 81 | 95 | 16 | 14 | 400 | 45 | 814 | - | 1045 | - | 943 | 35 | 1891 | 26 | 2071 | 498 | 498 | - | 949 | 740 | 680 | 150 | 800 | 24 | 6 | | | |
| 450 L ₋ | 2 | 85 | - | - | 14 | - | 450 | 81 | 933 | - | 1169 | 1293 | - | 42 | 2147 | 33 | - | - | 485 | 520 | - | 1080 | 1000 | 180 | 1150 | 28 | 6 | | | |
| | 4-12 | 127 | 100 | 116 | 18 | 16 | 450 | 81 | 933 | - | 1169 | 1293 | - | 42 | 2187 | 33 | 2407 | - | 525 | 560 | - | 1080 | 1000 | 180 | 1150 | 28 | 6 | | | |

Tolerances:

- A, B ± 0,8
- D, DA ISO m6
- F, FA ISO h9
- H +0 -1.0
- N ISO js6
- C ± 0,8

- ¹⁾ Terminal box 370
- ²⁾ Terminal box 750
- ³⁾ Terminal box 1200
- ⁴⁾ Size with alternative dimensions

Above table gives the main dimensions in mm. For detailed drawings please see our web-pages 'www.abb.com/motors&generators' or contact ABB.